

NEW CONSTRUCTION AT SYRIAN SITE

JANUARY 14, 2008



Figure 1.

Satellite imagery taken January 9, 2008 and obtained by ISIS from DigitalGlobe shows new construction at the site in Syria bombed by Israel in early September 2007 (see figures 1 and 9). ISIS identified the likely target site of the Israeli raid in an [October 24, 2007 report](#). The destroyed building was widely reported to be a nuclear reactor under construction¹.

¹ *Israel Struck Syrian Nuclear Project, Analysts Say*, David E. Sanger and Mark Mazzetti, The New York Times, October 14, 2007:

<http://www.nytimes.com/2007/10/14/washington/14weapons.html?scp=8&sq=syria+reactor>

Syrians Disassembling Ruins at Site Bombed by Israel, Officials Say, Robin Wright and Joby Warrick, Washington Post, October 19, 2007: <http://www.washingtonpost.com/wp-dyn/content/article/2007/10/18/AR2007101802549.html>

The Case for Israel's Strike on Syria, Martha Raddatz, ABC News, October 19th, 2007. <http://abcnews.go.com/print?id=3752687>

The new building has dimensions of approximately 60 meters by 60 meters, larger than the destroyed building, which had dimensions of about 47 meters by 47 meters. In addition, the roof on the new building is vaulted at the top instead of flat. The height of the new building was not determined from the imagery.

The building's purpose can also not be discerned from the satellite imagery. There are trenches and what appear to be sections of pipe east of the building (running away from the river). The trenches and pipes can be seen in the imagery for several kilometers. The trenches end at a site that may be a water treatment facility (see figures 2 through 6).

IAEA Director General Mohamed ElBaradei has sought permission from Syria to inspect the site, but so far Syria has denied the IAEA access. If Syria allows the IAEA to inspect the site, the inspectors will have a more difficult time looking for evidence of reactor construction, because the new building covers whatever was left of the original building.



Figure 2. August 10, 2007 wide image of suspect site and possible water treatment facility.



Figure 3. January 9, 2008 wide image of suspect site and possible water treatment facility.

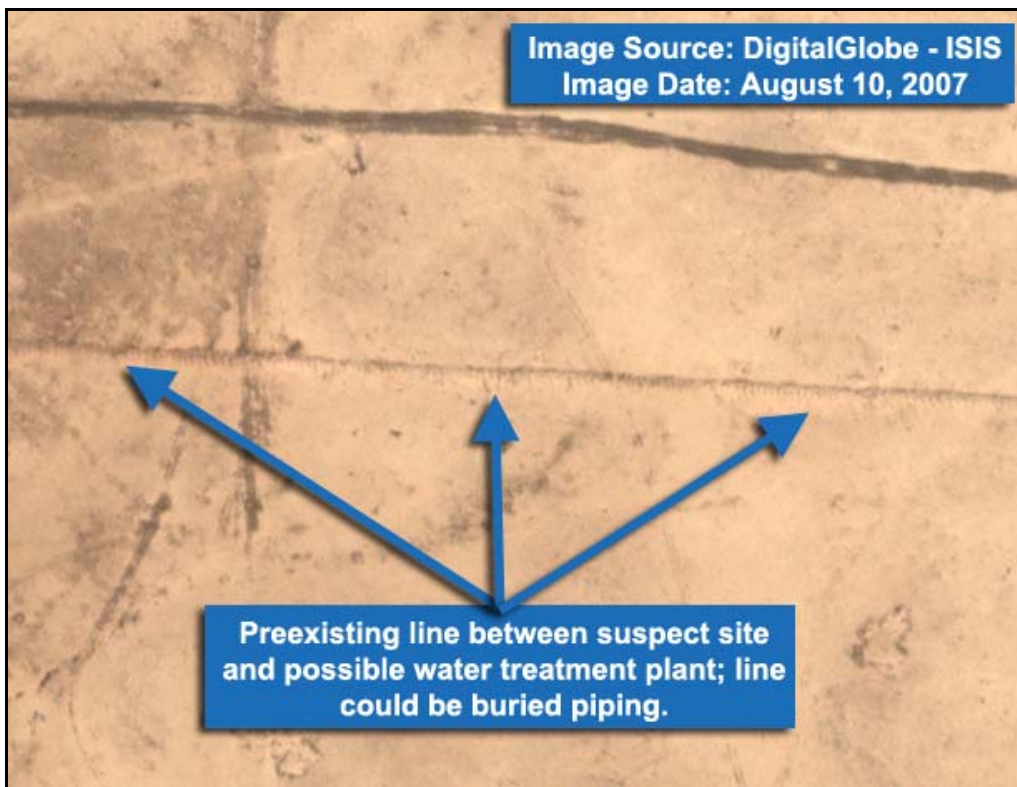


Figure 4. August 10, 2007 image of an area between suspect site and possible water treatment facility.

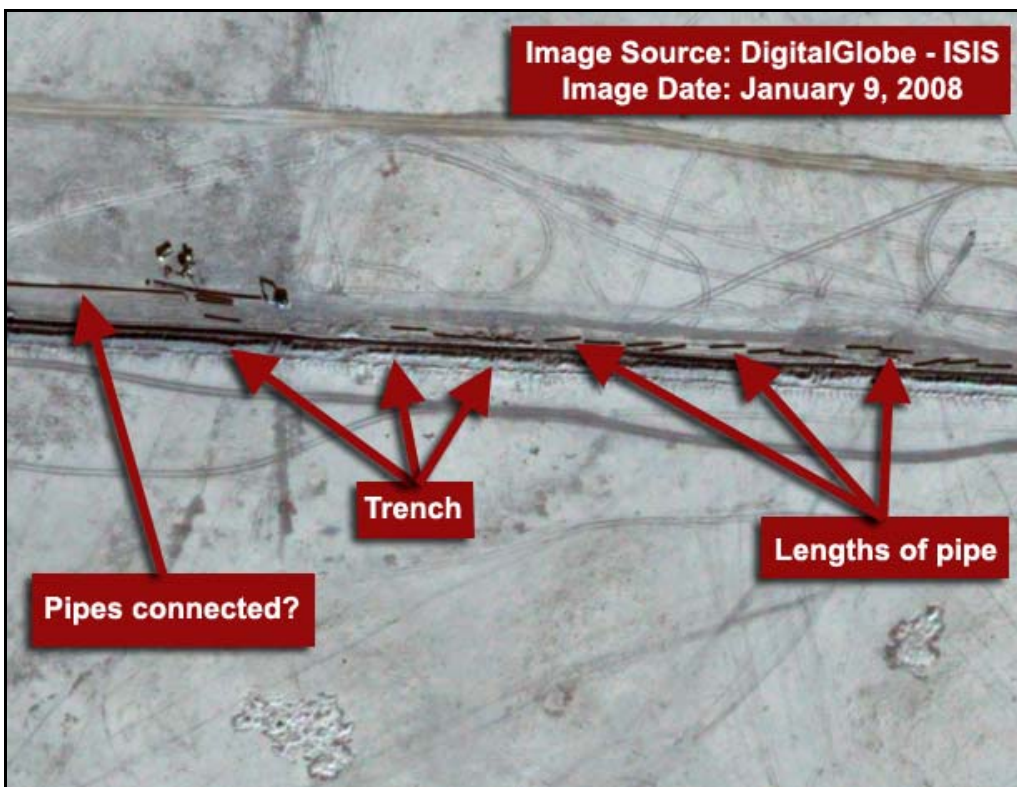


Figure 5. January 9, 2008 image of the same area with line of trenches and pipe sections between suspect site and possible water treatment facility. The preexisting line in the August 10, 2007 imagery follows virtually the exact same path of the entire length of the line of trenches and pipe sections between the suspect site and the possible water treatment facility in the January 9, 2008 imagery.



Figure 6. January 9, 2008 image of possible water treatment facility

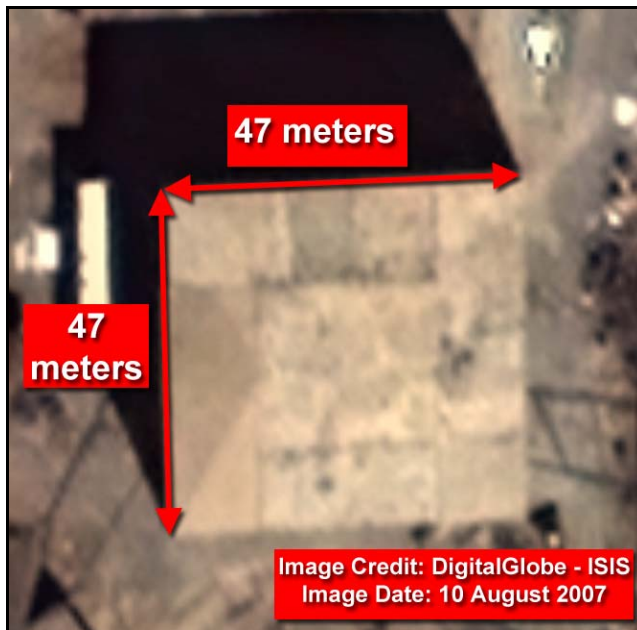


Figure 7. August 10, 2007 image of the suspect reactor building.



Figure 8. October 24, 2007 image showing the building removed and perhaps partially buried after the September 6 Israeli raid.

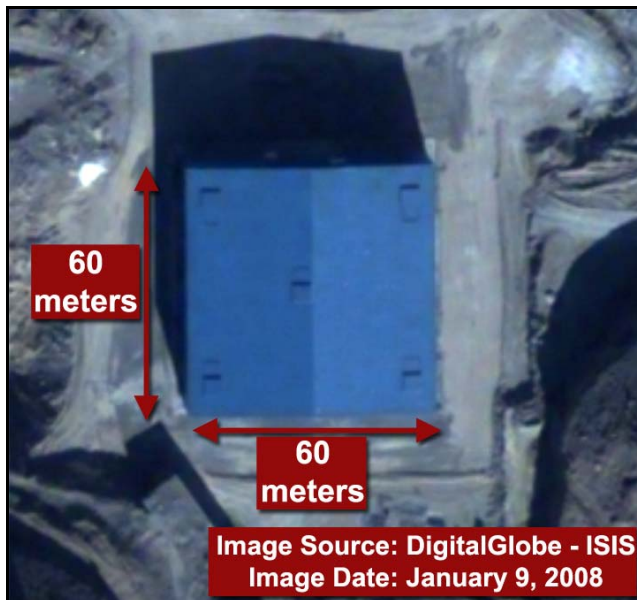


Figure 9. January 9, 2008 image of new structure at the suspect Syrian site. The new structure is approximately 13 meters wider than the original structure on each side.